

Sinks & Basins

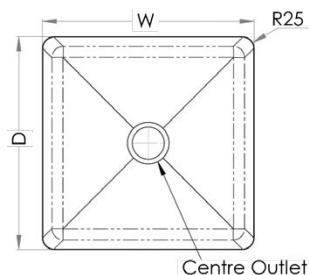


1.5mm Hand Fabricated Premium Bowls

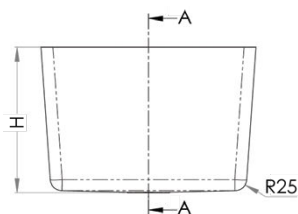
- Standard outlet sizes as per chart
- Directional satin polish
- 90mm outlet available on request. This outlet suits BW90S, BW90L, SSBW, SCRAP-S-90, SCRAP-S-90-316
- 127mm outlet available on request. This outlet suits SSBW-1, SCRAP-S and SCRAP-S316
- Centre outlet
- Cross breaks to the outlet
- Raw edge ready for welding
- Sound deadening material on bottom
- One piece construction
- Custom sizes available on request - lead times apply



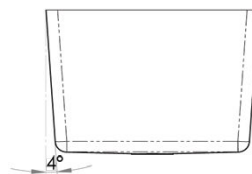
Top



Front



Cross Section



1.5MM 316 GRADE STAINLESS STEEL

PRODUCT CODE	W (mm)	D (mm)	H (mm)	OUTLET	CAPACITY
HF14-316	400	350	300	50	37.5L
HF11-316	400	400	300	50	43.3L
HF20-316	450	400	300	50	49L
HF17-316	450	450	300	50	55.5L
HF17-316-90	450	450	300	90	55.5L
HF19-316	600	450	300	50	75L