

Blue Seal Electric Combi Steamer

SAPIENS BOOSTED E6BSD 6 x 1/1 GN



- Direct steam injection system
- Manual controls
- Electronic thermostat 30°C-300°C
- AUTOCLIMA automatic system for controlling the perfect climate in the cooking chamber
- Variable fan speed with up to 6 speeds
- 3.5" LCD – TFT colour display for favourite programs, pre-set programs, fan, automatic washing, menus and settings
- LED HVS alphanumeric display for temperature, Autoclimate, time and core temperature
- Rapid selection scroller knob for program using scroll & push functions
- Multi-point core temperature probe
- Built-in retractable hand shower with tap
- USB connection to download HACCP data, software updates and storing cooking programs

GENERAL FEATURES

Cooking modes

- 95 preset recipe programs, including programs for reheating on the plate / pan
- 99 free programs, up to 9 cycles with name and icon creation
- Fast-Dry Boosted® - automatic system for quick dehumidification of the cooking chamber

Operation

- LED bars to indication actual cooking cycles in program mode
- Manual pre-heating
- Auto reverse (automatic reversing fan rotation) for perfect cooking uniformity
- Automatically regulated steam condensation
- Manual chamber pressure relief control
- Manual humidifier
- ECOVAPOR – automatic control of the system saturation in the cooking chamber
- Intelligent Energy System- oven optimises and controls the delivery of energy output to maintain best cooking temperature
- Self-diagnosis and fault display

Construction

- Perfectly smooth, watertight chamber
- Rear ventilated double tempered glass door with air chamber and interior heat-reflecting glass for less heat radiation towards operator
- Hinged inner glass for easy cleaning
- Adjustable door hinge for optimal seal
- Low consumption LED cooking chamber light
- IPX5 spray-proof and hose proof
- East Maintenance Access (EMA) – easy access for service maintenance at bottom front and right hand side of machine

Cleaning

- Vapour Cleaning System (VCS) automatic washing system caters for cleaning with reduce detergent usage in the chamber
- 7 automatic wash programs – manual, rinse, fast, soft, medium eco, hard eco, grill
- Wash Management System (WMS) – preschedule washing programs based on combi use

OPTIONAL FEATURES

- Right hinged door
- Configuration for connection to extraction hood

Blue Seal Electric Combi Steamer SAPIENS BOOSTED E6BSD 6 x 1/1 GN

Dimensions

Width	852mm
Depth	797mm
Height	775mm
Weight	110kg

Packed dimensions

Width	990mm
Depth	940mm
Height	980mm
Weight	134.1kg

Shelves

1/1 GN	6
Shelf Spacings	70mm

Installation requirements

(for precise installation instructions, please refer to the unit's installation manual).

Power connection requirements

Multi pole circuit breaker and all pole disconnection isolator switch installed near the appliance.

Supply line voltage

400-415V ~ 50Hz, 3P+N+E

Special voltage options available on request.

Power connection

Total (kW)	11.6
Convection power (kW)	11
Rated Current (A) (400V)	18

Installation clearances

- Rear 50mm
- Right 500mm
- Left 50mm

*Clearance required on fixed installations for service accessibility.

If heat sources are located near the RH side of the Sapiens combi, ensure that a minimum distance of 400mm is maintained. Install in accordance with local body regulations only on horizontal surfaces and not against combustible walls.

Water connection requirements

- Cold water
- Flow pressure (200-500kPa)
- Min. Water Flow 10 l/min
- Soft water connection*
- Shut-off valve with return flow inhibitor and dirt filter
- Water supply R3/4
- R50 waste water connection

Water quality

Total Water hardness	60-90ppm
pH	>7.5
Cl (chloride)	max. 30 mg/l
Cl2 (free chlorine)	max. 0.1 mg/l
Fe (Iron)	max. 0.1 mg/l
NH2Cl (monochloramine)	0.2 mg/l
Cold water temperature	max. 30°C
Softener water temperature	max. 50°C
Electrical conductivity	50 – 200 µS/cm

(*Water treatment may be required. Please refer to installation manual.)

Emissions

Latent heat	2088W
Sensible heat	1392W
Waste water max discharge temperature	100°C
Noise during operation	<50 dBA



Australia
www.moffat.com.au

New Zealand
www.moffat.co.nz

Australia
Moffat Pty Limited

Victoria/Tasmania
740 Springvale Road
Mulgrave, Victoria 3170
Telephone 03-9518 3888
Facsimile 03-9518 3833
vsales@moffat.com.au

New South Wales
Telephone 02-8833 4111
nswsales@moffat.com.au

South Australia
Telephone 03-9518 3888
vsales@moffat.com.au

Queensland
Telephone 07-3630 8600
qldsales@moffat.com.au

Western Australia
Telephone 08-9413 2400
wasales@moffat.com.au

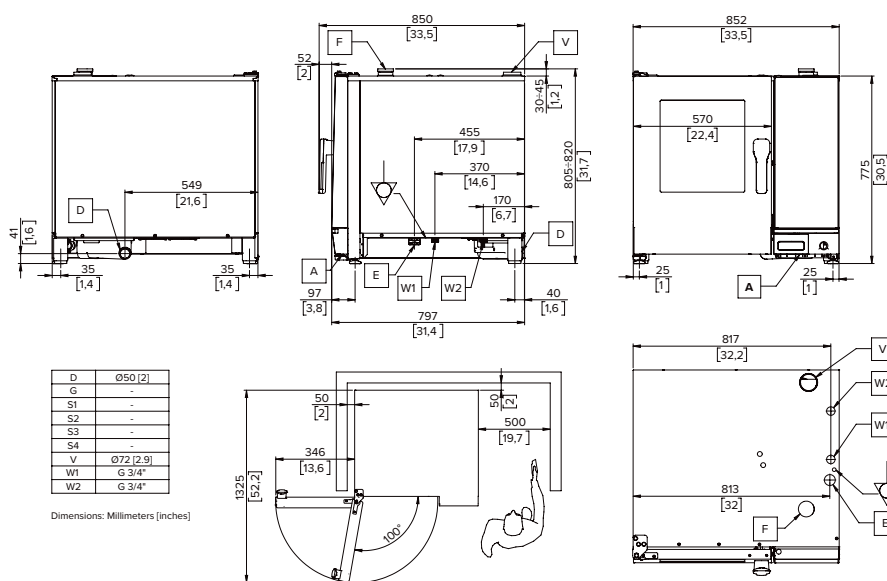
New Zealand
Moffat Limited

Rolleston
45 Illinois Drive
Izone Business Hub
Rolleston 7675
Telephone 03-983 6600
Facsimile 03-983 6660
sales@moffat.co.nz

Auckland
Telephone 09-574 3150
sales@moffat.co.nz

In line with policy to continually develop and improve its products, Moffat Limited reserves the right to change specifications and design without notice.

© Copyright Moffat Ltd
AN.SB.SS.01.23



Dimensions: Millimeters [Inches]