

# VEE RAY TWIN PAN GAS FRYER 450mm

GT46E

- Twin pan fryer flexibility – full single pan performance
- Patented infra-red burner system
- High performance fast recovery
- 2 digital display temperature controls with 3 product timers each
- Easy clean stainless steel open pan with 10 year limited warranty
- 13L oil capacity per pan
- Large capacity cool zones
- 32mm (1 1/4") drain valves
- Rear rollers
- Stainless steel exterior
- Easy service
- Fully modular



GT46E

## Overall Construction

- Stainless steel pan with 10 year limited warranty
- Bull nose welded 1.5mm 304 stainless steel
- Splashback 1.2mm 304 stainless steel
- Side panels 1.2mm 304 stainless steel
- Double skin door with 0.9mm 304 stainless exterior
- 32mm (1 1/4") drain valve per pan
- 63mm dia. heavy-duty 1.2mm 304 stainless steel adjustable legs at front and two rollers at rear
- 2 baskets and stainless steel lid supplied standard

## Controls

- Digital display electronic thermostats
- Thermostat range 88-193°C
- 3 programmable product timers with countdown display and alarms per pan
- Straight or temperature compensating cook time control
- Heating and basket drop displays
- Programmable melt cycles
- Over-temperature safety cut-outs
- Flame failure protection on each pilot
- Piezo ignition to standing pilot burners

## Cleaning and Servicing

- Open stainless steel pans for easy clean
- Easy clean basket support bar
- 32mm (1 1/4") drain valves for effective draining
- Easy clean stainless steel exterior
- Access to all parts from front of unit

# VEE RAY TWIN PAN GAS FRYER 450mm

GT46E

## Specifications

### Production rate

31kg/hr

### Pan Size

Oil capacity 13L (24lbs shortening) per pan  
Width 175mm  
Length 380mm  
Oil frying depth 95mm

### Baskets

2 chrome plated wire baskets  
140mm W x 335mm D x 145mm H  
Stainless steel perforated basket support plates

### Burners

1 x 45MJ/hr infra-red burner per pan

### Gas Power

90MJ/hr, 25kW total

### Gas connection

R<sup>3</sup>/<sub>4</sub> (BSP) male  
Optional rear connection  
(refer specification drawing)

### Electrical Connection

230-240 Vac, 1P+N+E, 50/60Hz, 0.5A  
3 pin 10A plug cordset fitted

### Dimensions

Width 450mm  
Depth 812mm  
Height 915mm  
Incl. splashback 1085mm

### Nett weight

88kg

### Packing data

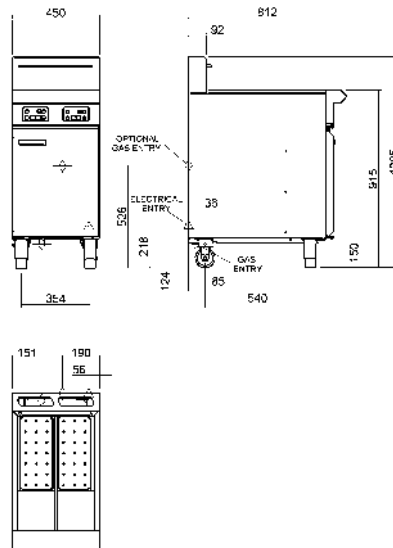
0.54m<sup>3</sup>, 129kg  
Width 870mm  
Depth 495mm  
Height 1255mm

### Gas types

Available in Natural gas and LP gas, please specify when ordering  
Units supplied complete with gas type conversion kits  
Other gas types on request

### Options

Adjustable feet at rear  
Filtamax Filtration System  
Fish plates  
Extra baskets  
Side splash guards  
Joining caps  
Castors



[moffat.com.au](http://moffat.com.au)

[moffat.co.nz](http://moffat.co.nz)

Australia

[moffat.com.au](http://moffat.com.au)

Moffat Pty Limited

Victoria/Tasmania  
740 Springvale Road  
Mulgrave, Victoria 3170  
Telephone +613-9518 3888  
Facsimile +613-9518 3833  
[vsales@moffat.com.au](mailto:vsales@moffat.com.au)

New South Wales  
Telephone +612-8833 4111  
[nswsales@moffat.com.au](mailto:nswsales@moffat.com.au)  
South Australia  
Telephone +613-9518 3888  
[vsales@moffat.com.au](mailto:vsales@moffat.com.au)

Queensland  
Telephone +617-3630 8600  
[qldsales@moffat.com.au](mailto:qldsales@moffat.com.au)  
Western Australia  
Telephone +618-9413 2400  
[wasales@moffat.com.au](mailto:wasales@moffat.com.au)

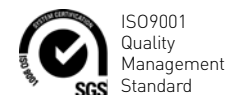
New Zealand

[moffat.co.nz](http://moffat.co.nz)

Moffat Limited

Rolleston  
45 Illinois Drive  
Izone Business Hub  
Rolleston 7675  
Telephone +64 3-983 6600  
Facsimile +64 3-983 6660  
[sales@moffat.co.nz](mailto:sales@moffat.co.nz)

Auckland  
Telephone +64 9-574 3150  
[sales@moffat.co.nz](mailto:sales@moffat.co.nz)



Cert. No. 6882

In line with policy to continually develop and improve its products, Moffat Limited reserves the right to change specifications and design without notice.

© Copyright Moffat Ltd  
AN.BSE.01.19/1620

an Ali Group Company



The Spirit of Excellence