

simply
philosophy



International Showroom

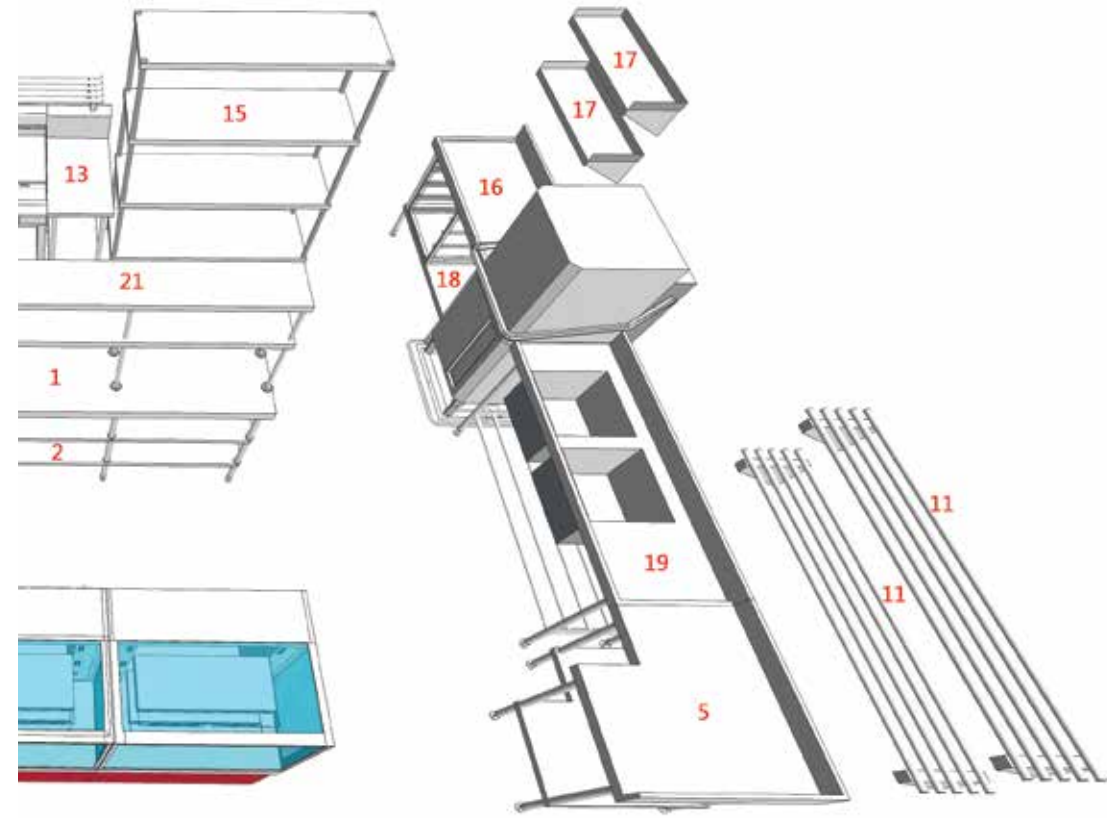
Quality

Availability

Value



simply
the best
system



see inside for product index

simply
the best
service

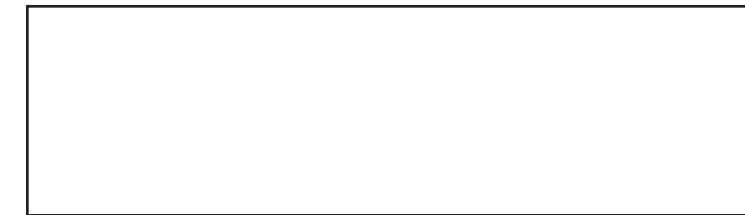


Simply Stainless strives for quality, availability and value. To assist with your design, all drawings can be downloaded from our product catalogue at www.simplystainless.com

For further information, please email: info@simplystainless.com
Full range is wholly manufactured out of an ISO9001 accredited factory that manufactures exclusively for Simply Stainless.



Available from



www.simplystainless.com

e-mail: info@simplystainless.com



simply stainless reserves the right to change specification, price and design without notice.

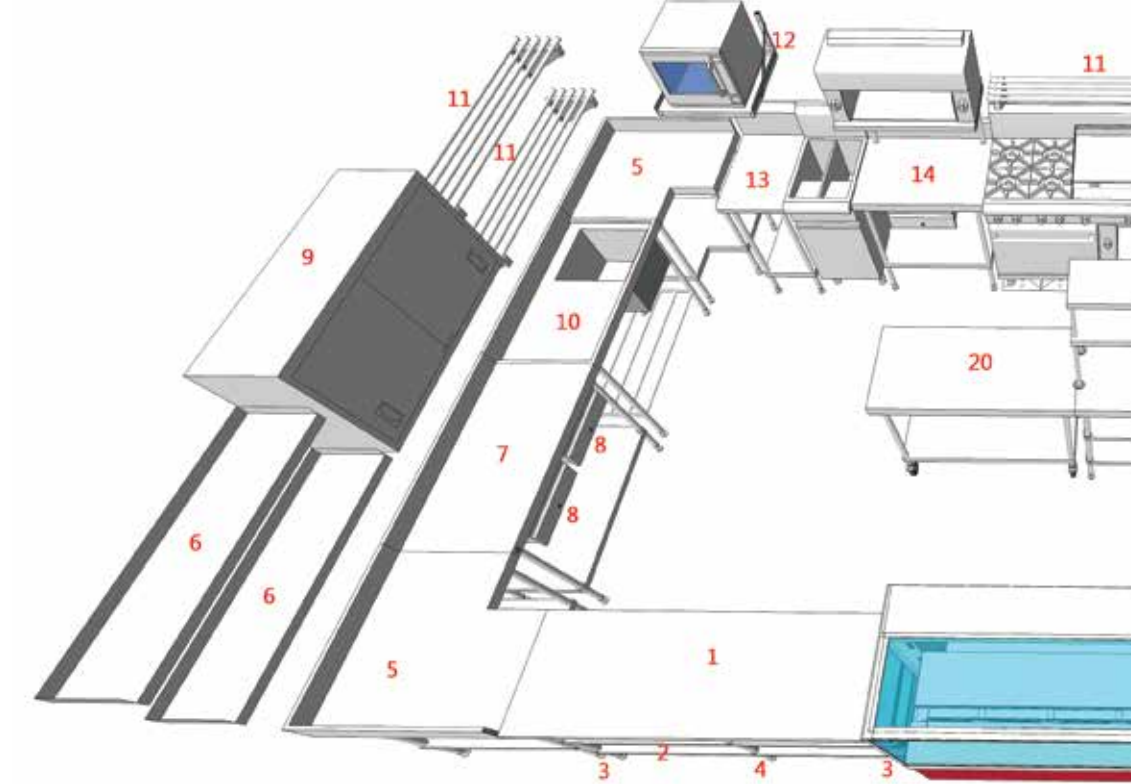


simply
the best
system



www.simplystainless.com

simply
available



See your local dealer
for immediate delivery

simply

the highest quality

How do you recognise quality in a modular benching system?

- The "stability test" and the "knock test"
- Close tolerance CNC engineering and machinery
- Highest quality TIG welding and professional finish
- Fully-welded sinks with uniformity of gauge thickness throughout and stainless steel reinforcing channel to worktop

Our confidence in Simply Stainless quality is backed by our Lifetime Warranty. See website for details.



simply built to last



1. Workbench



01-6-0600 01-7-0600 01-9-1200
 01-6-0900 01-7-0900 01-9-1500
 01-6-1200 01-7-1200 01-9-1800
 01-6-1500 01-7-1500 01-9-2100
 01-6-1800 01-7-1800 01-9-2400
 01-6-2100 01-7-2100
 01-6-2400 01-7-2400

4. Corner Bench with Splashback



04-6-0900 04-7-0900

7. Dishwash Outlet Bench



07-6-2100L 07-6-2100R
 07-7-1200L 07-7-1200R
 07-7-1500L 07-7-1500R
 07-7-1650L 07-7-1650R
 07-6-1200R 07-6-1650L 07-7-1800L
 07-6-1500L 07-6-1800L 07-7-2100L
 07-6-1500R 07-6-1800R 07-7-2100R

10. Solid Wall Shelf



10-0600
 10-0900
 10-1200
 10-1500
 10-1800
 10-2100
 10-2400

2. Workbench with Splashback



02-6-0300 02-6-1800 02-7-0900
 02-6-0450 02-6-2100 02-7-1200
 02-6-0600 02-6-2400 02-7-1500
 02-6-0900 02-7-0300 02-7-1800
 02-6-1200 02-7-0450 02-7-2100
 02-6-1500 02-7-0600 02-7-2400
 Also available as low height mixer stand
 02-7-0600MS

5. Sink Bench with Splashback



05-6-0600 05-6-1200C 05-6-1200L 05-6-1200R 05-6-1500C 05-6-1500L 05-6-1500R 05-6-1800C 05-6-1800L 05-6-1800R 05-6-1800R 05-7-1800L
 05-6-1200C 05-7-1500C 05-7-1800R
 05-6-1200L 05-7-1500L 05-7-2100C
 05-7-1200L 05-7-1500R 05-7-2100L
 05-7-1200R 05-7-1800C 05-7-2100R

8. Dishwash Inlet with Sink



08-6-2100L 08-6-2100R 08-7-1200L 08-7-1200R 08-7-1500L 08-7-1500R 08-7-1650L 08-7-1650R 08-6-1200L 08-6-1650L 08-7-1800L
 08-6-1200R 08-6-1650R 08-7-1800R
 08-6-1500L 08-6-1800L 08-7-2100L
 08-6-1500R 08-6-1800R 08-7-2100R

11. Pipe Wall Shelf



11-0600
 11-0900
 11-1200
 11-1500
 11-1800
 11-2100
 11-2400

3. Workbench Mobile



03-6-0600 03-6-2100 03-7-1500
 03-6-0900 03-6-2400 03-7-1800
 03-6-1200 03-7-0600 03-7-2100
 03-6-1500 03-7-0900 03-7-2400
 03-6-1800 03-7-1200

6. Double Sink Bench with Splashback



06-6-1200 06-7-1200
 06-6-1500 06-7-1500
 06-6-1800 06-7-1800
 06-6-2100 06-7-2100
 06-6-2400 06-7-2400

9. Double Bowl Dishwash Entry



09-6-1650-DB-R 09-7-1650-DB-R
 09-6-1650-DB-L 09-7-1650-DB-L

12. Single-Tier Shelf



12-0600
 12-0900
 12-1200
 12-1500
 12-1800
 12-2100

13. Two-Tier Shelf



13-0600 13-0900 13-1200 13-1500 13-1800 13-2100

16. Mobile Gastronorm & Bakery Rack Trolley



BT Bakery Trolley
 BTI Bakery Trolley Imperial
 16-1/1 Gastronorm
 16-2/1 Gastronorm
 16-1/1 LH (Low Height)

19. Drawers



19-1 Single
 19-2 Double
 19-3 Triple
 19-GN (Gastronorm Pan)

22. Leg Brace



22-LB-6-0600 22-LB-7-0600
 22-LB-6-0900 22-LB-7-0900
 22-LB-6-1200 22-LB-7-1200
 22-LB-6-1500 22-LB-7-1500
 22-LB-6-1800 22-LB-7-1800
 22-LB-6-2100 22-LB-7-2100
 22-LB-6-2400 22-LB-7-2400

14. Two-Tier Trolley



14-2

17. Four-Tier Storage Shelving



17-0900 17-1200 17-1500

20. Sink Cover



20-SBC

23. Granite Workbench



23-0600b 23-0600w 23-0900b 23-0900w 23-1200b 23-1200w



15. Three-Tier Trolley



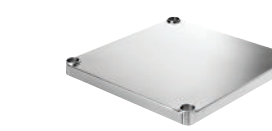
15-3

17. Defrost Rack



17-DF-0900 17-DF-1200

21. Undershelf



21-US-6-0600 21-US-7-0600
 21-US-6-0900 21-US-7-0900
 21-US-6-1200 21-US-7-1200
 21-US-6-1500 21-US-7-1500
 21-US-6-1800 21-US-7-1800
 21-US-6-2100 21-US-7-2100
 21-US-6-2400 21-US-7-2400
 21-US-6-4-0900 21-US-7-4-0900

24. Triple Bowl Sink with Upstand



24-6-2400TB 24-7-2400TB



25. Single Storage Shelf (to suit item 17)



25-SS Shelf-0900
 25-SS Shelf-1200
 25-SS Shelf-1500

28. Microwave Shelves



28-MW-0450 28-MW-0580

31. Blue Seal/Waldorf Infill Bench



31-BS-0300 31-BS-0450 31-BS-0600 31-BS-0900 31-WD-0300 31-WD-0450 31-WD-0600 31-WD-0900

33. Bollard



33-SSB

36. Dishwash Basket Cassette



36-DBC

34. Cleaner's Sink



34-CL

37. Dishwash Entry/Exit



37-6-0600

26. Ingredient Bins



26-bin

29. Wall Cupboards



29-WC-0900 29-WC-1200

32. Door Panel Kit



32-DPK-0600 32-DPK-0900 32-DPK-1200 32-DPK-1500 32-DPK-1800 32-DPK-2100 32-DPK-2400

Also available with optional mid-shelf

35. Gastronorm Dish Cassette



35-GDC

38. Folding Table



38-ET



27. Combi Oven Stand



27-conv 6/10+10/10
 27-conv 6/20+10/20
 27-E32-Turbo
 27-Elux
 27-Rat

32. Counter Conversion Kit



32-CCK-0600 32-CCK-0900 32-CCK-1200 32-CCK-1500 32-CCK-1800 32-CCK-2100 32-CCK-2400

36. Glaswash Rack



36-GR

36. Dishwash Basket Stand



36-DBS

39. Sink Waste and Basket



39-90mm

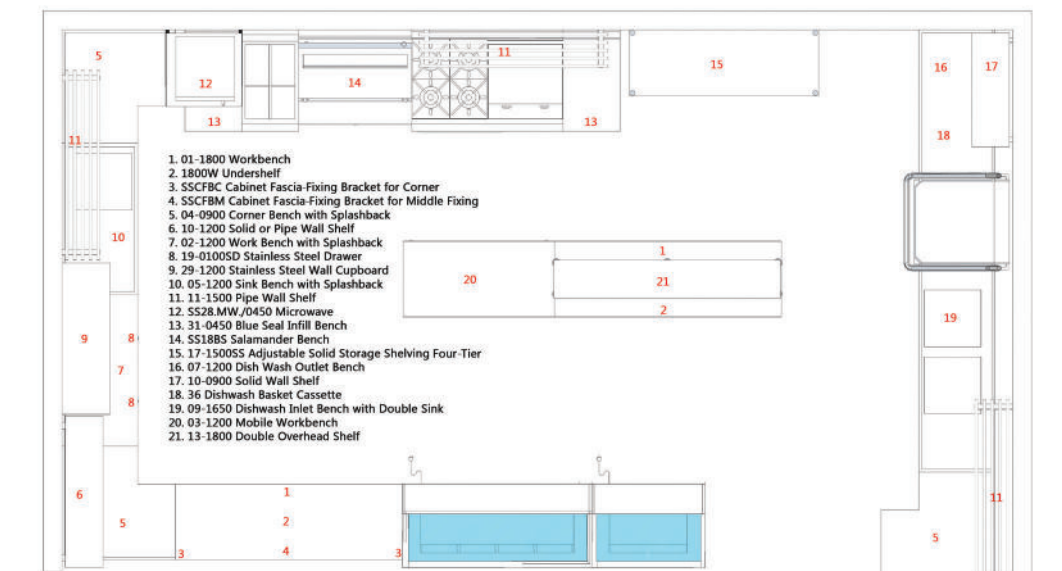
40. Waiter's Station



40-WS

simply

the best value



- 01-1800 Workbench
- 1800W Undershelf
- SSCFBC Cabinet Fascia-Fixing Bracket for Corner
- SSCFBM Cabinet Fascia-Fixing Bracket for Middle Fixing
- 04-0900 Corner Bench with Splashback
- 10-1200 Solid or Pipe Wall Shelf
- 02-1200 Work Bench with Splashback
- 19-0100SD Stainless Steel Drawer
- 29-1200 Stainless Steel Wall Cupboard
- 05-1200 Sink Bench with Splashback
- 11-1500 Pipe Wall Shelf
- SS28-MW-0450 Microwave
- 31-0450 Blue Seal Infill Bench
- SS188S Salamander Bench
- 17-1500SS Adjustable Solid Storage Shelving Four-Tier
- 07-1200 Dish Wash Outlet Bench
- 10-0900 Solid Wall Shelf
- 36 Dishwash Basket Cassette
- 09-1650 Dishwash Inlet Bench with Double Sink
- 03-1200 Mobile Workbench
- 13-1800 Double Overhead Shelf

The Conventional System
 Custom Stainless Steel Benching – Supplied & Installed
***USD \$22,500**

The Simply System
 Modular Stainless Steel Benching – Supplied & Installed
***USD \$10,093 Save *USD \$12,407!!!**

*pricing based on the above specification as at 2016. Price derived from an average of two Australian independent manufacturers

- Specifications 600 & 700 series**
- Tops**
- 1.2mm stainless steel no.4 finish
- Cores**
- 3mm Zinalume
 - 1.2 mm Stainless steel top hat stiffening channel
- Frames/legs**
- 38mm Dia round stainless steel tube satin polished 1.2mm thick.
 - Bench height 900mmH
 - Adjustable by 30/40mm
 - Stainless steel disc feet
- Undershelves**
- 1.2mm stainless steel no.4 finish with 'top hat' reinforcement
- Bowls**
- 1.2mm fully-welded and polished
 - 450 x 450 x 300mm deep bowls in all benches to accept 90mm sink waste
 - 600 x 450 x 300mm deep bowls in 06-6-2400 and 06-7-2400 only
 - Watermark & Watercorp approved sink waste supplied with all bowls