

Economical Saladette with Static Cooling



ESL3831



ESL3832



ESL3852



ESL3864

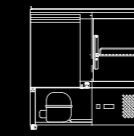
2 YEARS WARRANTY ON ALL PARTS AND LABOUR
EXTRA 2 YEARS WARRANTY ON PARTS WHEN YOU REGISTER WITH US ONLINE



PIZZA TABLE AND OPEN TOP SALADETTES

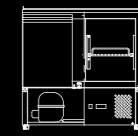
FEATURES

- High grade stainless steel interior and exterior
- Heavy duty marble prep area (ESL3831, ESL3852 and ESL3864)
- Heavy duty stainless steel top (ESL3832 and ESL3853)
- All fitted with European parts Compressor and EBM fan motor
- 43-degree ambient working temperature
- -2 to 8 degrees working temp
- Insulation foam CH10, ODP zero emissions
- Static cooling system
- Carel Italian digital controls
- Self-evaporating drainage
- One shelf per door
- Manual defrosting system
- Regular defrosting recommended
- Compressor and condenser situated on bottom
- Unit can be positioned against a wall
- Fits GN pans
- White Epoxy shelves and stainless steel rails
- Comes installed with 4 castors for easy mobility
- ESL3831 fits 5 x 1/6 GN Pans 100mm deep
- ESL3832 fits 5 x 1/6 GN Pans 100mm deep
- ESL3853 fits 7 x 1/6 and 1 x 1/9 GN Pans 100mm deep
- ESL3864 fits 7 x 1/3 GN Pans 100mm deep
- GN Pans and Lids not included



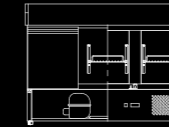
ESL3831

Capacity	300L
Power	250W
Voltage	220-240V/50Hz
Working Temp	-2°C-+8°C
Ambient Temp	43°C
Dimensions (mm)	W900 x D700 x H1100, 92kg
Packaging Dimensions (mm)	W954 x D754 x H1242, 108kg



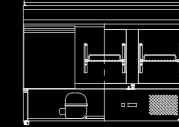
ESL3832

Capacity	300L
Power	250W
Voltage	220-240V/50Hz
Working Temp	-2°C-+8°C
Ambient Temp	43°C
Dimensions (mm)	W900 x D700 x H1040, 68kg
Packaging Dimensions (mm)	W954 x D754 x H1172, 84kg



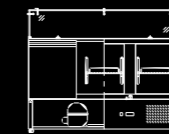
ESL3850

Capacity	380L
Power	300W
Voltage	220-240V/50Hz
Working Temp	+2°C-+8°C
Ambient Temp	43°C
Dimensions (mm)	W1365 x D700 x H1025, 170kg
Packaging Dimensions (mm)	W1419 x D754 x H1172, 187kg



ESL3851

Capacity	380L
Power	300W
Voltage	220-240V/50Hz
Working Temp	+2°C-+8°C
Ambient Temp	43°C
Dimensions (mm)	W1365 x D700 x H1040, 91kg
Packaging Dimensions (mm)	W1419 x D754 x H1172, 108kg



ESL3864

Capacity	380L
Power	300W
Voltage	220-240V/50Hz
Working Temp	-2°C-+8°C
Ambient Temp	43°C
Dimensions (mm)	W1365 x D700 x H1120, 170kg
Packaging Dimensions (mm)	W1419 x D754 x H1047, 187kg

