

FAST FRI TWIN PAN ELECTRIC FRYER 450mm

FN8226GE



- Twin pan fryer flexibility – full single pan performance
- Patented infra-red burner system
- High performance fast recovery
- 2 digital displays temperature control with 4 basket timers
- Easy clean stainless steel open pan with 10 year limited warranty
- 13L oil capacity per pan
- Large capacity cool zones
- 32mm (1 1/4") drain valves
- Stainless steel exterior
- Easy service
- Fully modular
- Low back model (FNL) available

Overall Construction

- Stainless steel pan with 10 year limited warranty
- Bull nose welded 1.5mm 304 stainless steel
- Splashback 1.5mm 304 stainless steel
- Side panels 1.2mm 304 stainless steel
- Double skin door with 0.9mm 304 stainless exterior
- 32mm (1 1/4") drain valve per pan
- 150mm legs in 63mm dia. heavy-duty 1.2mm 304 stainless steel with adjustable feet
- 2 baskets and stainless steel lid supplied standard

Controls

- Digital display electronic thermostats
- Thermostat range 88-195°C
- 2 programmable basket timers with countdown display and alarms per pan
- Heating and basket drop displays
- Programmable melt cycles
- Over-temperature safety cut-outs
- Flame failure protection on each pilot
- Piezo ignition to standing pilot burners

Cleaning and Servicing

- Open stainless steel pans for easy clean
 - Easy clean basket support bar
 - 32mm (1 1/4") drain valves for effective draining
 - Easy clean stainless steel exterior
 - Access to all parts from front of unit
-

Technical data sheet for

FAST FRI TWIN PAN ELECTRIC FRYER 450mm

Waldorf
800 SERIES

Specifications

Production rate

31kg/hr

Pan Size

Oil capacity 13L (24lbs shortening) per pan
Width 175mm
Length 380mm

Oil frying depth 95mm

Baskets

2 chrome plated wire baskets
140mm W x 335mm D x 145mm H
Stainless steel perforated basket support plates

Burners

1 x 45MJ/hr infra-red burner per pan

Gas Power

90MJ/hr, 25kW total

Gas connection

R ³/₄ (BSP) male
300mm from RH side, 35mm from rear,
and 125mm from floor
Optional rear connection
(refer specification drawing)

All units incorporate Natural and LP gas regulator

Electrical Connection

230-240 Vac, 1P+N+E, 50Hz, 0.5A

3 pin 10A cordset fitted

DIMENSIONS

Width 450mm
Depth 805mm
Height 915mm

Incl. splashback 1130mm

Incl. low back 1085mm

NETT WEIGHT

88kg

PACKING DATA

0.54m³, 129kg

Width 870mm

Depth 495mm

Height 1255mm

GAS TYPES

Available in Natural gas and LP gas

Please specify when ordering

Units supplied complete with gas type

conversion kits

Other gas types on request

OPTIONS AT EXTRA COST

Waldorf Filtamax filtration system

Fish plates

Extra baskets

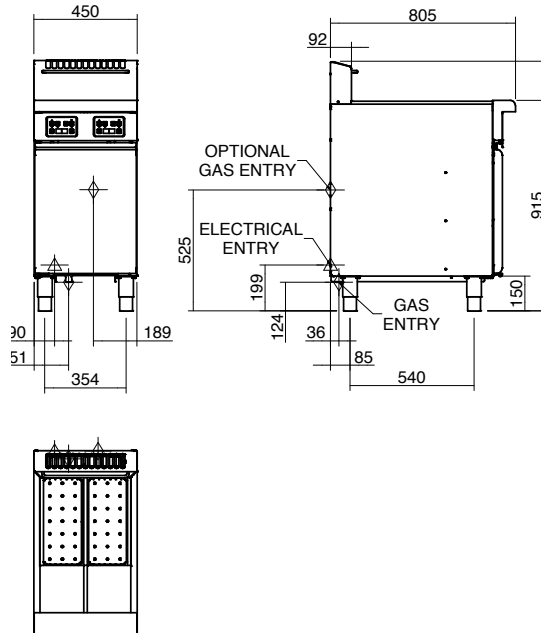
Side splash guards

Joining caps

Castors

Plinth mounting

FN8226GE



MOFFAT

moffat.com.au
moffat.co.nz

Australia
moffat.com.au

Moffat Pty Limited

Victoria/Tasmania
740 Springvale Road
Mulgrave, Victoria 3170
Telephone +613-9518 3888
Facsimile +613-9518 3833
vsales@moffat.com.au

New South Wales
Telephone +612-8833 4111
nswsales@moffat.com.au

South Australia
Telephone +613-9518 3888
vsales@moffat.com.au

Queensland
Telephone +617-3630 8600
qldsales@moffat.com.au

Western Australia
Telephone +618-9413 2400
wasales@moffat.com.au

New Zealand

moffat.co.nz

Moffat Limited

Rolleston
45 Illinois Drive
Izone Business Hub
Rolleston 7675
Telephone +64 3-983 6600
Facsimile +64 3-983 6660
sales@moffat.co.nz

Auckland
Telephone +64 9-574 3150
sales@moffat.co.nz



Cert. No. 6882

In line with policy to continually develop and improve its products, Moffat Limited reserves the right to change specifications and design without notice.

© Copyright Moffat Ltd
AN.W8.08/19

an Ali Group Company



The Spirit of Excellence