

## Single Pan Gas Pasta Cooker 450mm

PCLB8140G



- High performance single pan pasta cooker
- Patented infra-red burner system
- Easy clean 316 grade stainless steel open pan
- 40L water capacity
- Intergrated water fill and starch skimming water faucet
- Six stainless steel pasta baskets supplied standard
- Incorporated basket drain stand
- Safety cut out thermostat for empty pan/ water boil out
- Stainless steel exterior
- Black vitreous enamel finish to front panels
- Easy service
- Fully modular

### OVERALL CONSTRUCTION

- Pan 1.5mm 316 stainless steel
- Bull nose welded 1.5mm 304 stainless steel
- Splashback 1.5mm 304 stainless steel
- Side panels 1.2mm 304 stainless steel
- Double skin door with 0.9mm 304 stainless exterior
- 25mm (1") skimming overflow and pan drains drain valve
- 150mm legs in 63mm dia. heavy-duty 1.2mm 304 stainless steel with adjustable feet
- 6 stainless steel baskets with moulded handle grips supplied standard (no lid on pasta cooker)
- 304 stainless steel wire basket support grid in pan

### CONTROLS

- Large easy to use knob - heat resistant reinforced
- Variable high boil to standby simmer burner control
- Fine adjustment water faucet for pan filling and water refreshing/ starch skimming
- Pan protection safety cut-out thermostat
- Millivolt gas valve system (no electrical supply)
- Flame failure protection on pilot
- Piezo ignition to standing pilot burner

### CLEANING AND SERVICING

- Open stainless steel pan for easy clean
- Hinged basket drain stand
- Removable basket support grid
- 25mm (1") drain valve for effective draining
- Easy clean stainless steel exterior
- Access to all parts from front of unit

### Series Options

PCLB - Low back models

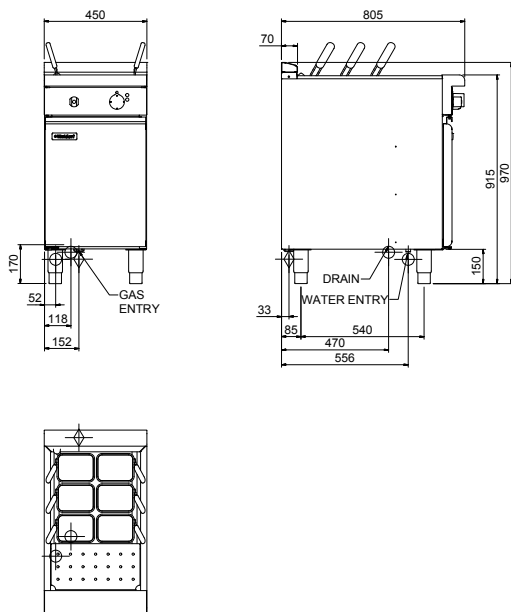
PCB - 215mm splashback option

---

# Waldorf Bold

## Single Pan Gas Pasta Cooker 450mm

PCLB8140G



### SPECIFICATIONS

#### Pan Size

Water capacity 40L  
Width 365mm  
Length 405mm  
Basket immersion depth 165mm

#### Baskets

6 stainless steel perforated baskets with moulded plastic handles 125mm x 165mm x 180mm deep  
Stainless steel wire basket support grid

#### Burners

1 x infra-red burner

#### Gas power (gross)

47MJ/hr, 13kW Natural gas  
46MJ/hr, 12.8kW LP gas

#### Gas connection

R $\frac{3}{4}$  (BSP) male  
300mm from RH side, 35mm from rear, and 125mm from floor

All units incorporate Natural and LP gas regulator

#### Water Connection

Cold water connection 50mm from left hand side, 556mm from rear and 140mm from floor

R $\frac{1}{2}$  (BSP) male

#### Drain Connection

Drain must be connected to system suitable for boiling water discharge

1" BSP Male connection 118mm from left hand side, 470mm from rear, and 170mm from floor

#### Dimensions

Width 450mm  
Depth 805mm  
Height 915mm  
Incl. low back 970mm  
Incl. splashback option 1130mm

#### Nett weight

78kg nett

#### Packing data

0.541m<sup>3</sup>, 120kg  
Width 870mm  
Depth 495mm  
Height 1255mm

#### Gas types

Available in Natural gas and LP gas  
Please specify when ordering

Units supplied complete with gas type conversion kits

Other gas types on request

#### OPTIONS AT EXTRA COST

Extra baskets - 165mm square x 180mm deep

Optional rectangular baskets 320mm x 165mm x 180mm deep

Side splash guards

Joining caps

Castors

Plinth mounting

**MOFFAT**

moffat.com.au  
moffat.co.nz

#### Australia

moffat.com.au

#### Moffat Pty Limited

Victoria/Tasmania  
740 Springvale Road  
Mulgrave, Victoria 3170  
Telephone +613-9518 3888  
Facsimile +613-9518 3833  
vsales@moffat.com.au

New South Wales  
Telephone +612-8833 4111  
nswsales@moffat.com.au

South Australia  
Telephone +613-9518 3888  
vsales@moffat.com.au

Queensland  
Telephone +617-3630 8600  
qldsales@moffat.com.au

Western Australia  
Telephone 618-9413 2400  
wasales@moffat.com.au

#### New Zealand

moffat.co.nz

#### Moffat Limited

Rolleston  
45 Illinois Drive  
Izone Business Hub  
Rolleston 7675  
Telephone +64 3-983 6600  
Facsimile +64 3-983 6660  
sales@moffat.co.nz

Auckland  
Telephone +64 9-574 3150  
sales@moffat.co.nz



ISO9001  
Quality  
Management  
Standard

Designed and manufactured by

**MOFFAT**

ISO9001

All Waldorf Bold products are designed and manufactured by Moffat using the internationally recognised ISO9001 quality management system, covering design, manufacture and final inspection, ensuring consistent high quality at all times.

In line with policy to continually develop and improve its products, Moffat Limited reserves the right to change specifications and design without notice.

© Copyright Moffat Ltd  
AN.WBD.S.02.19

an Ali Group Company



The Spirit of Excellence