

Twin Pan Electric Fryer 450mm

FNLB8224EE



- 14kW high performance twin pan fryer
- 2 digital display temperature control
4 basket timers
- Easy clean stainless steel open pan with
10 year limited warranty
- 12L per pan oil capacity
- 25mm (1") drain valves
- Stainless steel exterior
- Black vitreous enamel finish to front panels
- Easy service
- Fully modular

OVERALL CONSTRUCTION

- Stainless steel pan
- Bull nose welded 1.5mm 304 stainless steel
- Splashback 1.5mm 304 stainless steel
- Side panels 1.2mm 304 stainless steel
- Double skin door with 0.9mm 304 stainless exterior
- Hinge out counterbalanced heating elements
- 25mm (1") drain valves
- 150mm legs in 63mm dia. heavy-duty 1.2mm 304 stainless steel with adjustable feet
- 2 baskets and stainless steel lid supplied standard

CONTROLS

- Digital display electronic thermostats
- Thermostat range 88-195°C
- 2 programmable basket timers with countdown display and alarms per pan
- Heating and basket drop displays
- Programmable melt cycles
- Fail-safe over-temperature safety cut-outs
- Element tilt switch for heating cut-out on element lift

CLEANING AND SERVICING

- Open stainless steel pans with hinge out elements for easy clean
- Easy clean basket support bar
- 25mm (1") drain valve for effective draining
- Easy clean stainless steel exterior
- Access to all controls from front of unit

Series Options

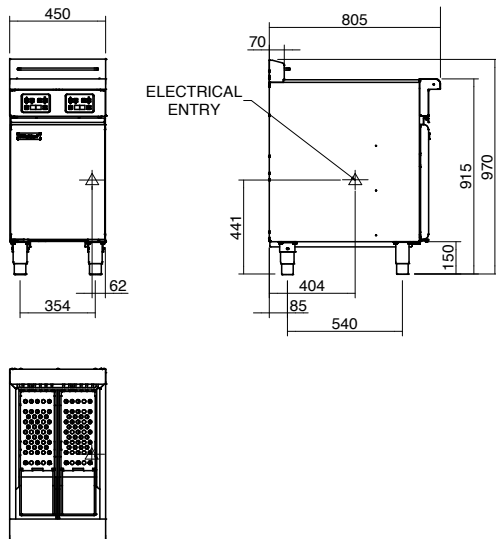
FNLB - Low back models

FNB - 215mm splashback option

Waldorf Bold

Twin Pan Electric Fryer 450mm

FNLB8224EE



SPECIFICATIONS

Production rate

31kg/hr

Pan Size (per pan)

Oil capacity 12L (24lbs shortening)

Width 175mm

Length 380mm

Oil frying depth 95mm

Baskets

2 chrome plated wire baskets

140mm W x 335mm D x 145mm H

Elements (per pan)

3 x 2.83kW stainless steel heating element

Electrical requirements

17kW, 400-415Vac, 50/60hz, 3P+N+E

L1 23.6A

L2 23.6A

L3 23.6A

Electrical Connection

62mm from RH side, 365mm from rear and 440mm from floor

Dimensions

Width 450mm

Depth 805mm

Height 915mm

Incl. low back 970mm

Incl. splashback option 1130mm

Nett weight

74kg nett

Packing data

0.54m³, 116kg

Width 870mm

Depth 495mm

Height 1255mm

OPTIONS AT EXTRA COST

Waldorf Filtamax filtration system

Extra baskets

Side splash guards

Joining caps

Castors

Plinth mounting

MOFFAT

moffat.com.au
moffat.co.nz

Australia

moffat.com.au

Moffat Pty Limited

Victoria/Tasmania
740 Springvale Road
Mulgrave, Victoria 3170
Telephone +613-9518 3888
Facsimile +613-9518 3833
vsales@moffat.com.au

New South Wales
Telephone +612-8833 4111
nswsales@moffat.com.au

South Australia
Telephone +613-9518 3888
vsales@moffat.com.au

Queensland
Telephone +617-3630 8600
qldsals@moffat.com.au

Western Australia
Telephone +618-9413 2400
wasales@moffat.com.au

New Zealand

moffat.co.nz

Moffat Limited

Rolleston
45 Illinois Drive
Izone Business Hub
Rolleston 7675
Telephone +64 3-983 6600
Facsimile +64 3-983 6660
sales@moffat.co.nz

Auckland
Telephone +64 9-574 3150
sales@moffat.co.nz



ISO9001
Quality
Management
Standard

Designed and manufactured by



ISO9001

All Waldorf Bold products are designed and manufactured by Moffat using the internationally recognised ISO9001 quality management system, covering design, manufacture and final inspection, ensuring consistent high quality at all times.

In line with policy to continually develop and improve its products, Moffat Limited reserves the right to change specifications and design without notice.

© Copyright Moffat Ltd
AN.WBD.S.02.19

an Ali Group Company



The Spirit of Excellence