

Single Pan Gas Fryer 450mm

FNLB8120GE



- High performance single pan fryer
- Patented infra-red burner system
- Digital display temperature control with 2 basket timers
- Easy clean stainless steel open pan with 10 year limited warranty
- 20L oil capacity
- Large capacity cool zone
- 32mm (1¼") drain valve
- Stainless steel exterior
- Black vitreous enamel finish to front panels
- Easy service
- Fully modular

OVERALL CONSTRUCTION

- Stainless steel pan with 10 year limited warranty
- Bull nose welded 1.5mm 304 stainless steel
- Splashback 1.5mm 304 stainless steel
- Side panels 1.2mm 304 stainless steel
- Double skin door with 0.9mm 304 stainless exterior
- 32mm (1¼") drain valve
- 150mm legs in 63mm dia. heavy-duty 1.2mm 304 stainless steel with adjustable feet
- 2 baskets and stainless steel lid supplied standard

CONTROLS

- Digital display electronic thermostat
- Thermostat range 88-195°C
- 2 programmable basket timers with countdown display and alarms
- Heating and basket drop displays
- Programmable melt cycles
- Over-temperature safety cut-out
- Flame failure protection on each pilot
- Piezo ignition to standing pilot burners

CLEANING AND SERVICING

- Open stainless steel pan for easy clean
- Easy clean basket support bar
- 32mm (1¼") drain valve for effective draining
- Easy clean stainless steel exterior
- Access to all parts from front of unit

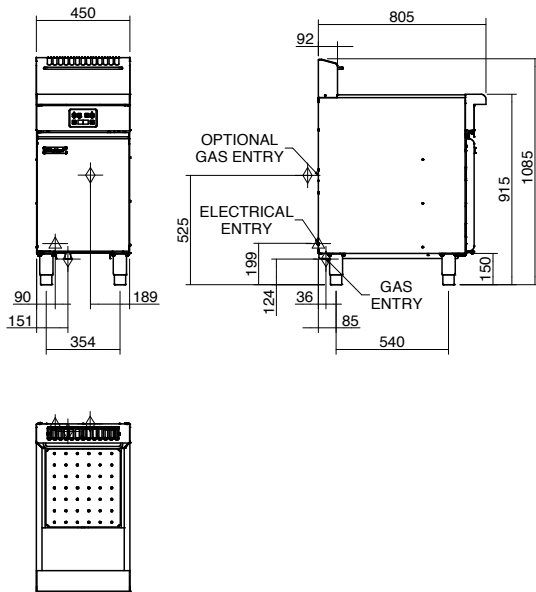
Series Options

FNLB - Low back models

FNB - 215mm splashback option

Single Pan Gas Fryer 450mm

FNLB8120GE



SPECIFICATIONS

Production rate

31kg/hr

Pan Size

Oil capacity 20L (37lbs shortening)

Width 365mm

Length 380mm

Oil frying depth 95mm

Baskets

2 chrome plated wire baskets

140mm W x 335mm D x 145mm H

Stainless steel perforated basket support plate

Burners

2 x 45MJ/hr infra-red burners

Gas power (gross)

90MJ/hr, 25kW

Gas connection

R ¾ (BSP) male

300mm from RH side, 35mm from rear, and 125mm from floor

Optional rear connection

(refer specification drawing)

All units incorporate Natural and LP gas regulator

Electrical Connection

230-240 Vac, 1P+N+E, 50Hz, 0.5A

3 pin 10A cordset fitted

Dimensions

Width 450mm

Depth 805mm

Height 915mm

Incl. low back 1085mm

Incl. splashback option 1130mm

Nett weight

81kg nett

Packing data

0.54m³, 122kg

Width 870mm

Depth 495mm

Height 1255mm

Gas types

Available in Natural gas and LP gas

Please specify when ordering

Units supplied complete with gas type

conversion kits

Other gas types on request

OPTIONS AT EXTRA COST

Waldorf Filmax filtration system

Fish plates

Extra baskets

Side splash guards

Joining caps

Castors

Plinth mounting

MOFFAT

moffat.com.au
moffat.co.nz

Australia

moffat.com.au

Moffat Pty Limited

Victoria/Tasmania

740 Springvale Road

Mulgrave, Victoria 3170

Telephone +613-9518 3888

Facsimile +613-9518 3833

vsales@moffat.com.au

New South Wales

Telephone +612-8833 4111

nswsales@moffat.com.au

South Australia

Telephone -613-9518 3888

vsales@moffat.com.au

Queensland

Telephone +617-3630 8600

qldsales@moffat.com.au

Western Australia

Telephone 618-9413 2400

wasales@moffat.com.au

New Zealand

moffat.co.nz

Moffat Limited

Rolleston

45 Illinois Drive

Izone Business Hub

Rolleston 7675

Telephone +64 3-983 6600

Facsimile +64 3-983 6660

sales@moffat.co.nz

Auckland

Telephone +64 9-574 3150

sales@moffat.co.nz



ISO9001

Quality

Management

Standard

Designed and manufactured by

MOFFAT

ISO9001

All Waldorf Bold products are designed and manufactured by Moffat using the internationally recognised ISO9001 quality management system, covering design, manufacture and final inspection, ensuring consistent high quality at all times.

In line with policy to continually develop and improve its products, Moffat Limited reserves the right to change specifications and design without notice.

© Copyright Moffat Ltd
AN.WBD.S.02.19

an Ali Group Company



The Spirit of Excellence