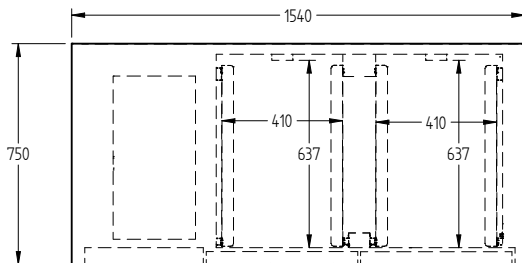


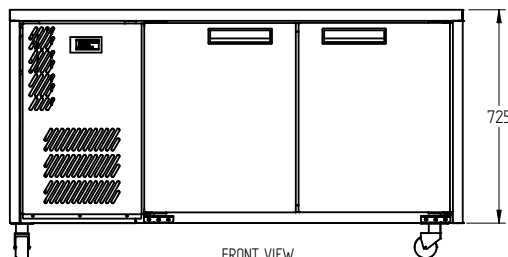
HOB2UFB



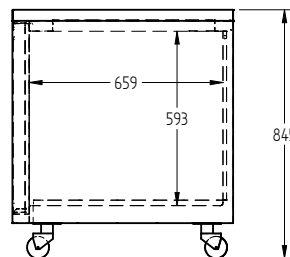
CATEGORY	BAKERY
RANGE	Opal
UNIT	REFRIGERATOR
TYPE	SELF CONTAINED
DOORS	2



TOP VIEW



FRONT VIEW



SIDE VIEW

SPECIFICATIONS

CAPACITY LITRES	380
TEMPERATURE	-5°C / 3°C
FRONT BREATHING	YES
DIMENSIONS - W X D X H (ON CASTORS) MM	1540 W x 750 D x 845 H
WEIGHT UNPACKED (KG)	150

STANDARD INCLUSIONS ***

DOOR TYPE	Standard: SD (Solid Door)
FINISH (INTERIOR AND EXTERIOR EXCLUDING REAR AND UNDER)	SS (Stainless Steel)
TRAY SLIDES PER DOOR (NO TRAYS OR SHELVES SUPPLIED) (ACCOMODATES 600 MM X 400MM TRAYS)	5

ELECTRICAL

POWER SUPPLY	10 amp	
FRIDGE MODELS	RUNNING AMPS	2.8

GAS TYPE

REFRIGERANT	FRIDGE MODELS	R134a
-------------	---------------	-------

*** For **OPTIONS** refer to the current Williams Price Guide