

# Model: H 500

## Commercial Pass Through Dish Washer



### Product Advantages



#### Mike-1

Fully electronic control with integrated infrared technology



#### Delicate Wash Protection

Soft-start feature starts the wash pump slowly and gradually builds water pressure, protecting glassware from shifting or breaking



#### Optimal Wash Performance

Powerful stainless steel upper and lower rotating wash and rinse systems.

### Original Eco Filter System

Provides exceptional cleaning results thanks to wash water filtration with dirt removal capabilities and optimal tank water regeneration

## Technical Data

<b>Water consumption L/basket</b>		3.0
<b>Basket dimensions in mm</b>		500 x 500
<b>* Program Cycles in seconds</b>		90/150/240
1.0	Drain hose connection Pump out drain	Hose 3/4"
1.1	Drain max. 700mm above floor level	DN 50
2.0	Water connection point	DN 20
2.1	Water supply	Hot water Max 60°C 53.4 ppm water hardness 250-500Kpa flow pressure
3.0	Power connection	Lead 1,400mm long
3.1	Power Supply	3NPE 400V 50Hz, 8.5Kw 17.2A

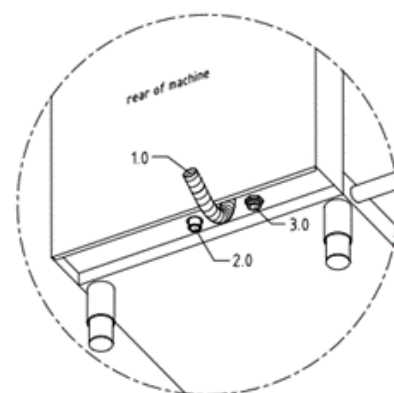
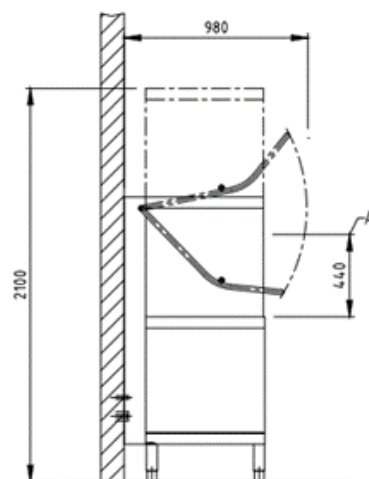
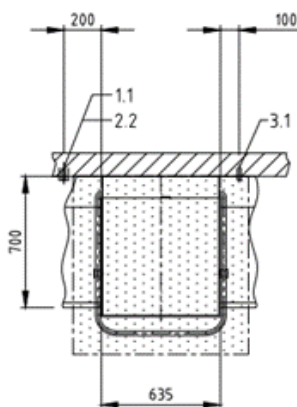
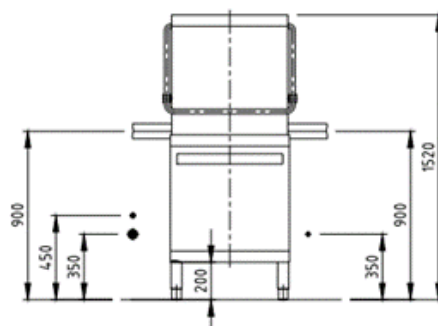
\* For connection to cold water and/or short basket exchange times, the wash cycles may increase to achieve hygienic final rinse temperatures

### Heat Is Retained In The Machine

Double wall construction, saves energy and reduces operating costs

### Ready To Install

Supplied with fill and drain hoses. Electrical cable, detergent and rinse aid and supply lines (Watermark Approved)



### ✓ Perfect Results Every Time

Equipped with rinse and drain pumps as standard features

### ✓ Ideal For Tall Dishware

440mm entry height

### ✓ Easy To Clean

Self-clean cycle for easy, hygienic cleaning of the wash chamber