



Electrolux

Modular Cooking Range Line 700XP Freestanding Electric Boiling Pan 60lt indirect heat

ITEM # _____

MODEL # _____

NAME # _____

SIS # _____

AIA # _____



Modular Cooking Range Line

700XP Freestanding Electric Boiling Pan 60lt
indirect heat

371094 (E7BSEHINF0)

60-lt indirect electric boiling
pan with pressure switch

Short Form Specification

Item No. _____

To be installed on height adjustable feet in stainless steel. High efficiency heating elements (9.4 kW). Temperature is controlled by a power regulator; heating elements with temperature limiter. Exterior panels in stainless steel with Scotch Brite finish. One piece pressed work top in 1.5 mm thick stainless steel. Right-angled side edges to allow flush-fitting junction between units.

Main Features

- Kettle is suitable to cook, sauté or poach all kinds of produce.
- Produce is uniformly heated in the base and side walls of the kettle by an indirect heating system that uses integrally generated saturated steam at a temperature of 110° C in the jacket.
- Pressed cooking vessel and lid in 316 AISI Stainless steel.
- Unit to feature high efficiency heating elements (9.4 kW) with energy control and temperature limiter.
- External valve allows to manually evacuate excess air accumulated in the jacket during heating phase.
- Appliance is IPX4 water resistance certified.
- Solenoid valve to refill with hot and cold water.
- Safety valve avoids overpressure of the steam in the jacket.
- No overshooting of cooking temperatures, fast reaction.
- Large capacity drain tap enables precise portioning of the discharged food, especially small quantities.
- Firmly fitting cover to reduce cooking time and save energy costs.
- Ergonomic: unique ratio vessel diameter and height; depth facilitates stirring and gentle food handling.
- Discharge tube and tap are very easy to clean from outside.
- Smooth large surfaces, easy access for cleaning.
- Pressure switch control monitors energy and water consumption.
- Exterior panels in Stainless Steel with Scotch Brite finish.
- One piece pressed 1.5 mm work top in Stainless steel.
- Model has right-angled side edges to allow flush fitting joints between units, eliminating gaps and possible dirt traps.
- Unit delivered with four 50 mm legs in stainless steel as standard (all round Stainless steel kick plates as option).

Construction

- All exterior panels in Stainless Steel with Scotch Brite finishing.
- One piece pressed 1.5 mm work top in Stainless steel.
- Model has right-angled side edges to allow flush fitting joints between units, eliminating gaps and possible dirt traps.

Optional Accessories

- Kit 4 wheels - 2 swivelling with brake - it is mandatory to install base support and wheels PNC 206135 ☐
- Flanged feet kit PNC 206136 ☐

APPROVAL: _____

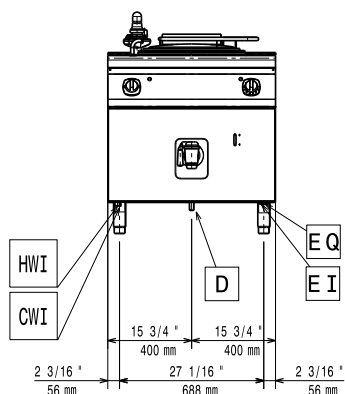


Electrolux

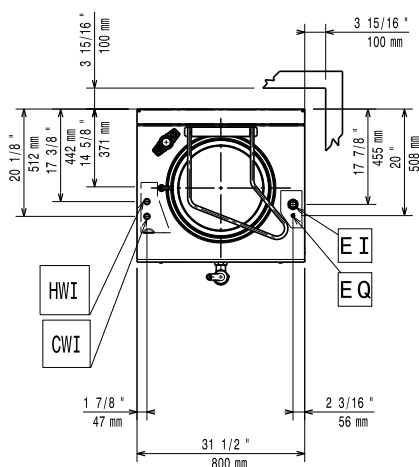
700XP Freestanding Electric Boiling Pan 60lt indirect heat
Modular Cooking Range Line

- Frontal kicking strip for concrete installation, 200mm PNC 206146
☐
- Frontal kicking strip for concrete installation, 400mm PNC 206147
☐
- Frontal kicking strip for concrete installation, 800mm PNC 206148
☐
- Frontal kicking strip for concrete installation, 1000mm PNC 206150
☐
- Frontal kicking strip for concrete installation, 1200mm PNC 206151
☐
- Frontal kicking strip for concrete installation, 1600mm PNC 206152
☐
- Frontal kicking strip, 200mm (not for refr-freezer base) PNC 206174
☐
- Frontal kicking strip, 400mm (not for refr-freezer base) PNC 206175
☐
- Frontal kicking strip, 800mm (not for refr-freezer base) PNC 206176
☐
- Frontal kicking strip, 1000mm (not for refr-freezer base) PNC 206177
☐
- Frontal kicking strip, 1200mm (not for refr-freezer base) PNC 206178
☐
- Frontal kicking strip, 1600mm (not for refr-freezer base) PNC 206179
☐
- Kit 4 feet for concrete installation (not for 900 line free standing grill) PNC 206210
☐
- Pair of side kicking strips PNC 206249
☐
- Pair of side kicking strips for concrete installation PNC 206265
☐
- Chimney upstand, 800mm PNC 206304
☐
- Base support for feet or wheels - 400mm (700/900) PNC 206366
☐
- Base support for feet or wheels - 800mm (700/900) PNC 206367
☐
- Base support for feet or wheels - 1200mm (700/900) PNC 206368
☐
- Base support for feet or wheels - 1600mm (700/900) PNC 206369
☐
- Base support for feet or wheels - 2000mm (700/900) PNC 206370
☐
- Rear paneling - 800mm (700/900) PNC 206374
☐
- Rear paneling - 1000mm (700/900) PNC 206375
☐
- Rear paneling - 1200mm (700/900) PNC 206376
☐
- 2 side covering panels for free standing appliances PNC 216000
☐
- 1-section noodle basket for 60lt boiling pans PNC 921626
☐

Front

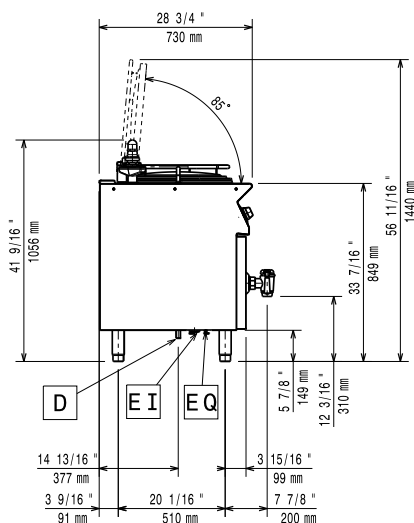


Top



- CWI = Cold Water inlet
D = Drain
EI = Electrical connection
EQ = Equipotential screw
HWI = Hot water inlet

Side



Electric

Supply voltage:

371094 (E7BSEHINF0)

400 V/3N ph/50/60 Hz

Total Watts:

9.4 kW

Key Information:

Pan useful capacity:	60 lt
Vessel (round) diameter:	420 mm
Net weight:	100 kg
Shipping weight:	115 kg
Shipping height:	1140 mm
Shipping width:	900 mm
Shipping depth:	920 mm
Shipping volume:	0.94 m ³

No clearance needed on rear sides of unit if wall is of non combustible type. If wall is combustible, minimum 50 mm wall clearance should be maintained.