

Infra-Red Heating Assemblies



Roband infra-red heating assemblies are manufactured from an extruded anodized aluminium section, specifically designed to breathe. These units are designed for use at either front or back of house where more heat and no light is required. The heat is provided by a stainless steel element and an energy regulator is used on the standard units to precisely control the output, emitting a very even heat over the length of the warming area. All models come with a standard mount bracket. Optional mount kit is also available. **See page 29 for details.**

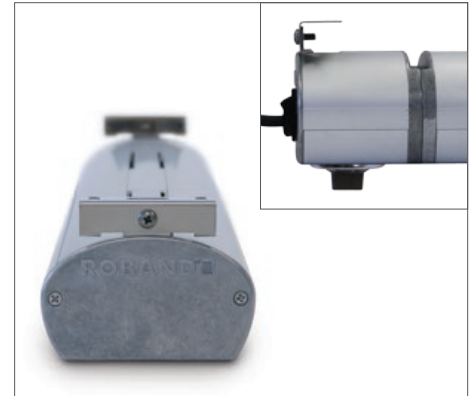
Standard Models

The standard infra-red heating assemblies (e.g. HE900) come **with** a control box that houses the isolating on/off switch and an energy regulator to control heat output. They also feature a simple mounting system and come complete with a 10 Amp plug and cord.

Fabricator Models

The infra-red heating assemblies are also available **without** the control box, energy regulator and on/off switch (e.g. HUE825) so they can be connected to a remote switch setup. The removal of the control box shortens the length of the assembly accordingly.

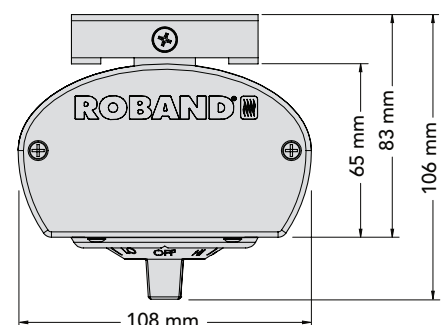
Standard mounting bracket available on standard and fabricator models



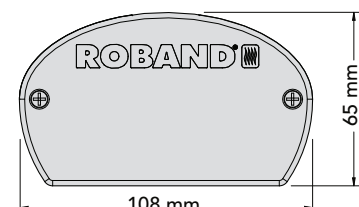
A variable control energy regulator is used to precisely control the output



Dimensions for standard infra-red heating assemblies (HE).



Dimensions for fabricator quartz lamps and infra-red heating assemblies (HUQ & HUE).



Infra-Red Heating Assemblies

SPECIFICATIONS - STANDARD MODELS (INCLUDES CONTROL BOX)

MODEL	DESCRIPTION	MOUNT TYPE	CURRENT Amps	POWER Watts	LENGTH mm	INCLUSIONS
HE900	1 element	Standard	3.9	900	900	Switch, plug & cord
HE1200	1 element	Standard	5.2	1200	1200	Switch, plug & cord
HE1500	1 element	Standard	6.5	1500	1500	Switch, plug & cord
HE1800	1 element	Standard	7.8	1800	1800	Switch, plug & cord



HE1200 pictured

SPECIFICATIONS - FABRICATOR MODELS (NO CONTROL BOX)

MODEL	DESCRIPTION	MOUNT TYPE	CURRENT Amps	POWER Watts	LENGTH mm	INCLUSIONS
COMPLETE WITH A, N & E WIRE IN PTFE 1500 MM LENGTH FOR INSTALLATION TO YOUR OWN CONTROLLER						
HUE825	1 element	Standard	3.9	900	825	N/A
HUE1125	1 element	Standard	5.2	1200	1125	N/A
HUE1425	1 element	Standard	6.5	1500	1425	N/A
HUE1725	1 element	Standard	7.8	1800	1725	N/A



HUE1125 pictured

Optional Mount Kit

Mount kit for Quartz and Infra-red series assemblies. The kit includes 2 x 19 mm diameter round tubes, inserts and mounting brackets, with instructions for installation by an electrician. 600 mm tubes can be cut to the desired length.



SPECIFICATIONS

MODEL	DESCRIPTION	MOUNT TYPE	LENGTH (mm)
HM600	Mount kit for all Quartz lamps and Infra-red heat assemblies.	Round	600



Fabricator model with HM600 mount kit installed and shortened to the desired length