

Individual Heat Lamps

These units are effective for overhead heating in food preparation and serving areas. Designed specifically to be wired in pairs and in series, Roband heat lamps maintain prepared food at the correct serving temperature, while enhancing presentation at the same time.

FEATURES

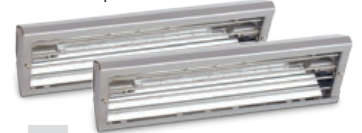
- Stainless steel construction
- Long life globes
- Series wiring further extends globe life
- Easily replaceable globes
- Aesthetic cover design

SPECIFICATIONS

| | MODEL | DESCRIPTION | POWER Watts* | CURRENT Amps | DIMENSIONS w x d x h (mm) |
|---|--------------------|--------------------|------------------|-----------------|------------------------------|
| A | HL22 [†] | 500 W lamp only | 250 [†] | 1.1 | 190 x 120 x 50 |
| | HL24 [†] | 1000 W lamp only | 500 [†] | 2.2 | 270 x 120 x 50 |
| | HL26 [†] | 1500 W lamp only | 750 [†] | 3.3 | 335 x 120 x 50 |
| B | HL22C [†] | HL22 with cover | 250 [†] | 1.1 | 270 x 120 x 80 |
| | HL24C [†] | HL24 with cover | 500 [†] | 2.2 | 270 x 120 x 80 |
| | HL26C [†] | HL26 with cover | 750 [†] | 3.3 | 335 x 120 x 80 |
| C | HLC190 | Cover to suit HL22 | N/A | N/A | 270 x 120 x 55 |
| | HLC260 | Cover to suit HL24 | N/A | N/A | 270 x 120 x 55 |
| | HLC330 | Cover to suit HL26 | N/A | N/A | 335 x 120 x 55 |

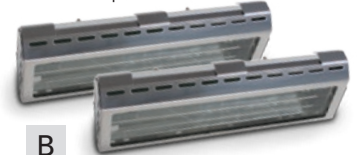
[†]Must be installed in pairs and wired in series. *Total power output of 1 pair wired in series.

HL26 x 2 pictured



A

HL26C x 2 pictured



B

HLC330 x 2 pictured



C

Fluorescent Lighting Assemblies

Roband fluorescent lamp assembly profiles match the aluminium extrusion from which the quartz lamp assemblies are manufactured.

Specifically designed for use in refrigerated displays or where illumination is required without heat, these units have a diffused perspex cover over the light. They also feature a simple mounting system and come complete with an isolating switch and a 10 amp plug and cord.



HF900 pictured

SPECIFICATIONS

| MODEL | DESCRIPTION | POWER Watts | CURRENT Amps | LENGTH mm |
|--------|---------------------|----------------|-----------------|--------------|
| HF900 | 1 fluorescent globe | 30 | 0.1 | 900 |
| HF1500 | 1 fluorescent globe | 45 | 0.2 | 1500 |