

# HO1UFBBA



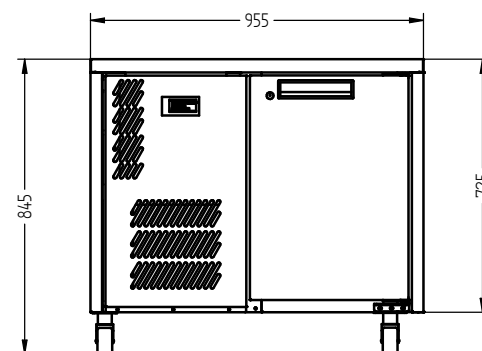
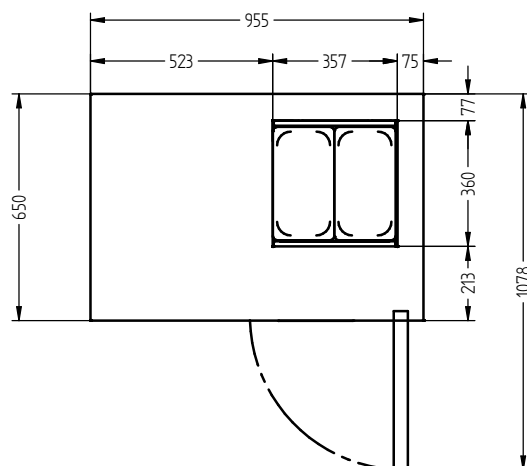
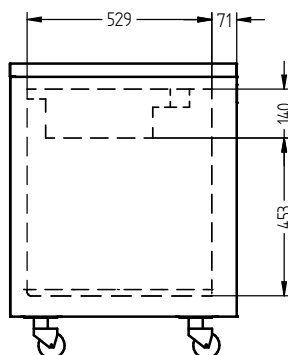
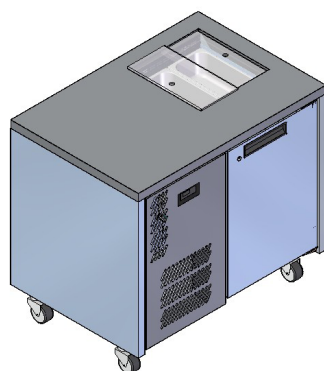
CATEGORY FOODSERVICE COUNTERS

RANGE **Opal**

UNIT REFRIGERATOR

TYPE SELF CONTAINED

DOORS 1



## SPECIFICATIONS

CAPACITY LITRES	190
TEMPERATURE	1°C / 4°C
FRONT BREATHING	YES
DIMENSIONS - W X D X H (ON CASTORS) MM	955 W x 650 D x 845 H
WEIGHT UNPACKED (KG)	100

## STANDARD INCLUSIONS \*\*\*

DOOR TYPE	Standard: SD (Solid Door) Optional: DR (Drawer)
FINISH (INTERIOR AND EXTERIOR EXCLUDING REAR AND UNDER)	SS (Stainless Steel)
SHELVES/DOOR	1
BLOWN AIRWELL (100MM DEEP 1/3 PANS INCLUDED)	2 X 1/3 PANS

## ELECTRICAL

POWER SUPPLY		10 amp
BLOWN AIRWELL MODELS	RUNNING AMPS	2.0

## GAS TYPE

REFRIGERANT	FRIDGE MODELS	R134a
-------------	---------------	-------

\*\*\* For **OPTIONS** refer to the current Williams Price Guide