

LE3UFB



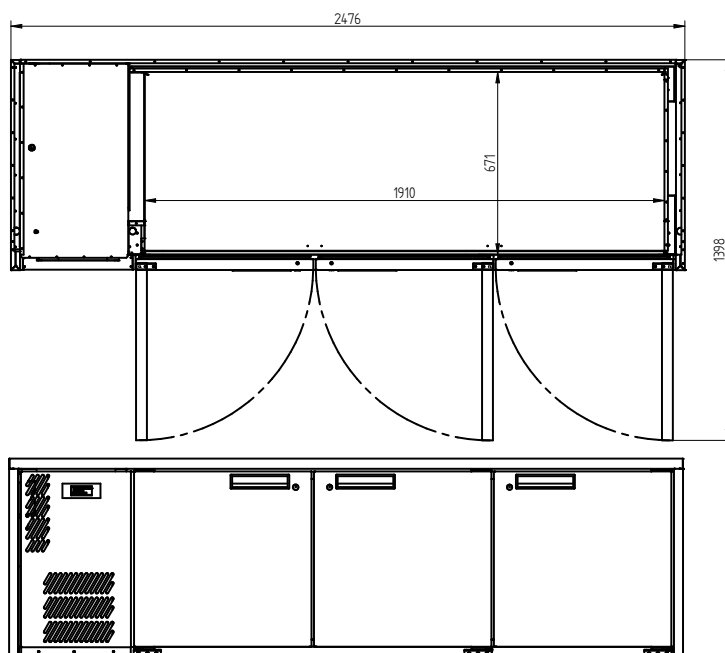
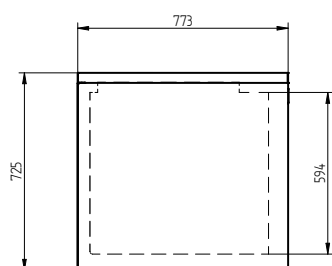
CATEGORY FOODSERVICE COUNTERS

RANGE **EMERALD**

UNIT FREEZER

TYPE SELF CONTAINED

DOORS 3



SPECIFICATIONS

CAPACITY LITRES	900
TEMPERATURE	-18°C / -22°C
FRONT BREATHING	YES
DIMENSIONS - W X D X H (ON CASTORS) MM	2476 W x 773 D x 845 H
WEIGHT UNPACKED (KG)	200

STANDARD INCLUSIONS ***

DOOR TYPE	Standard: SD (Solid Door) Optional: DR (Drawer)
FINISH (INTERIOR AND EXTERIOR EXCLUDING REAR AND UNDER)	SS (Stainless Steel)
SHELVES/DOOR	2

ELECTRICAL

POWER SUPPLY		10 amp
FREEZER MODELS	RUNNING AMPS	5.8

GAS TYPE

REFRIGERANT	FREEZER MODELS	R404a
-------------	----------------	-------

*** For **OPTIONS** refer to the current Williams Price Guide