



TRUE REFRIGERATION  
INTERNATIONAL

UK Tel +44 (0) 1709 888 080 • Germany Tel +49 (0) 7622 6883 0  
Free Phone to U.S. 0 800 894 928 • www.truemfg.com



7/19

Model:

**TPP-AT-60D-2-HC**

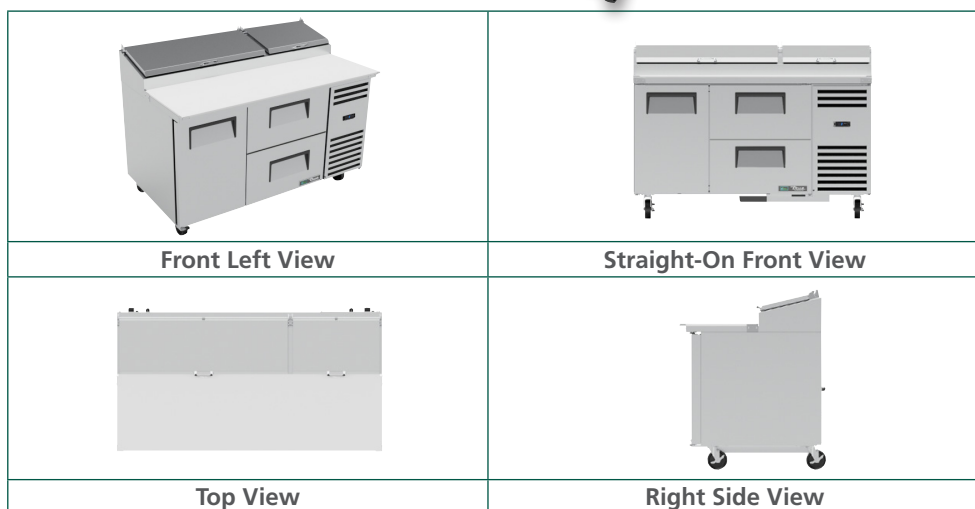
## Food Prep Table:

*Solid Door & Drawers Pizza Prep Table with Alternate Top & Hydrocarbon Refrigerant*

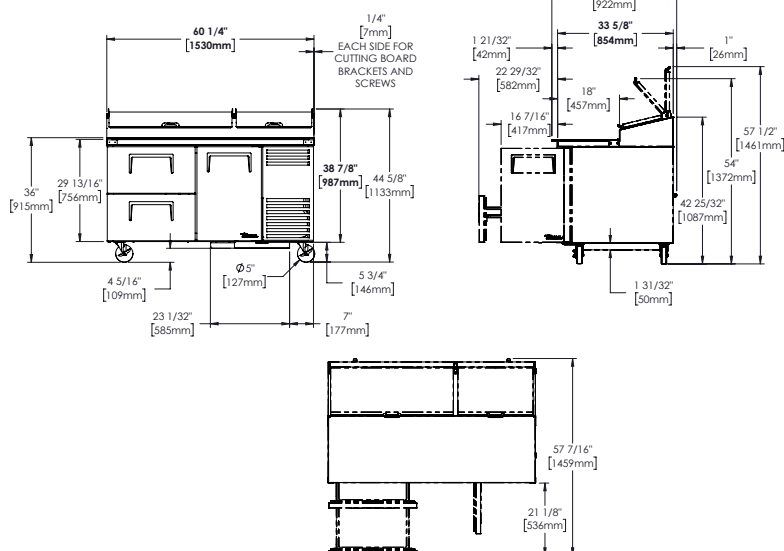


## TPP-AT-60D-2-HC

- ▶ True's pizza prep tables are designed with enduring quality that protects your long term investment.
- ▶ Factory engineered, self-contained, capillary tube system using environmentally friendly R290 hydro carbon refrigerant that has zero (0) ozone depletion potential (ODP), & three (3) global warming potential (GWP).
- ▶ High capacity, factory balanced environmentally friendly forced-air refrigeration system holds 33°F to 41°F (.5°C to 5°C).
- ▶ NSF/ANSI Standard 7 compliant for open food product.
- ▶ Stainless steel, patented, foam insulated flat lids keep pan temperatures colder, lock in freshness, and minimize condensation.
- ▶ Stainless steel, patented, foam insulated flat lids keep pan temperatures colder, lock in freshness, and minimize condensation.
- ▶ Interior - attractive, NSF approved, clear coated aluminum liner. Stainless steel floor with coved corners.
- ▶ Extra-deep 19 1/2" (496 mm) full length removable cutting board included.
- ▶ Sanitary, high density, NSF approved white polyethylene provides tough preparation surface.
- ▶ Heavy duty, PVC coated wire shelves (door sections).
- ▶ Each drawer accommodates two (2) full size 12"L x 20"W x 8"D (305 mm x 508 mm x 204 mm) pans (sold separately).
- ▶ Foamed-in-place using a high density, polyurethane insulation that has zero ozone depletion potential (ODP) and zero global warming potential (GWP).



## PLAN VIEW



## ROUGH-IN DATA

Specifications subject to change without notice.  
Chart dimensions rounded up to the next whole millimeter (inches rounded up to the next 1/8").

Model	Doors	Drawers	Shelves	Pans (top)	Cabinet Dimensions (mm)			HP	Voltage	Amps	Capacity (litres)	Refrigerant	Crated Weight (kg)
					W	D†	H						
TPP-AT-60D-2-HC	1	2	2	8	1530	854	1133	1/4	230-240/50/1	1.8	453	R290	—

† Depth does not include 26 mm for rear bumpers and 44mm for cutting board.